


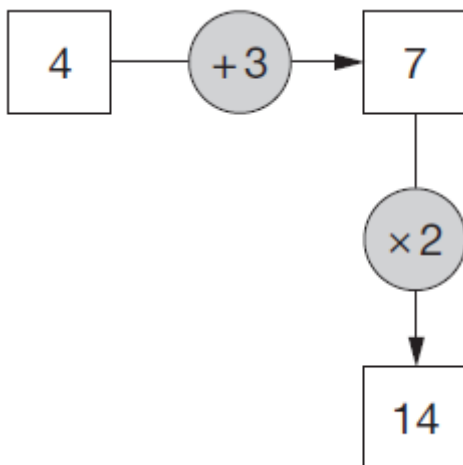
# Year 3 Addition and Subtraction

Q1. Circle the number closest to 500.

 525    491    511    408    550

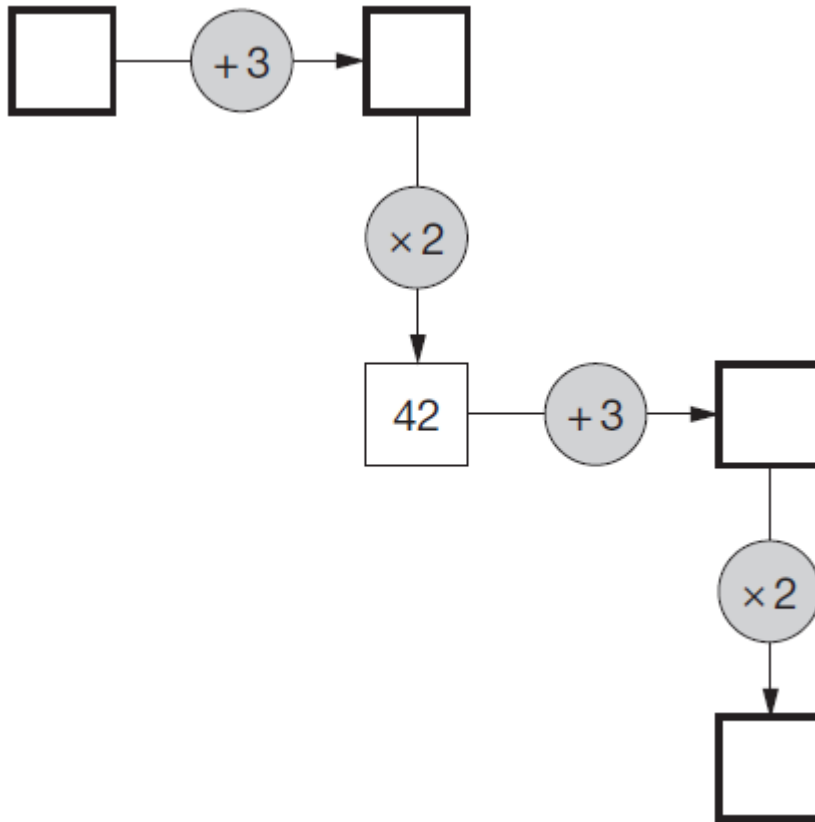
1 mark

Q2. Here is a number machine.



Here is another number machine.

Write the four missing numbers.



2 marks

**Q3.** Here are six number cards.



Use **all** the number cards to complete the two sums below.

*Handwritten arrow pointing to the first box*

$$\square + \square = \square$$

$$\square + \square = \square$$

1 mark

**Q4.** Write in the missing numbers.

$$37 \times \boxed{\phantom{000}} = 111$$

1 mark

$$225 - \boxed{\phantom{000}} = 150$$

1 mark

$$\boxed{\phantom{000}} \div 4 = 21$$

1 mark

**Q5.** Use any of these numbers.

**12      3      9      18      6**

Write one number in each box to make a correct sum.

$$\boxed{\phantom{000}} = \boxed{\phantom{000}} + \boxed{\phantom{000}}$$

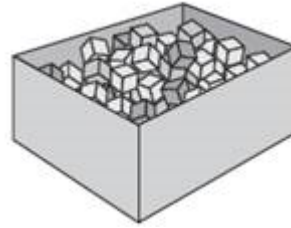
1 mark

**Q6.**

Seb has a box of **120** cubes.

He uses some of the cubes to build a tower.

**77** cubes are left over.



How many cubes has he used?

\_\_\_\_\_

1 mark

Seb has 77 cubes left over.

He builds two more towers.

One tower uses 18 cubes and the other uses 35 cubes.

How many of his **77** cubes has he got left now?

\_\_\_\_\_

Show your working

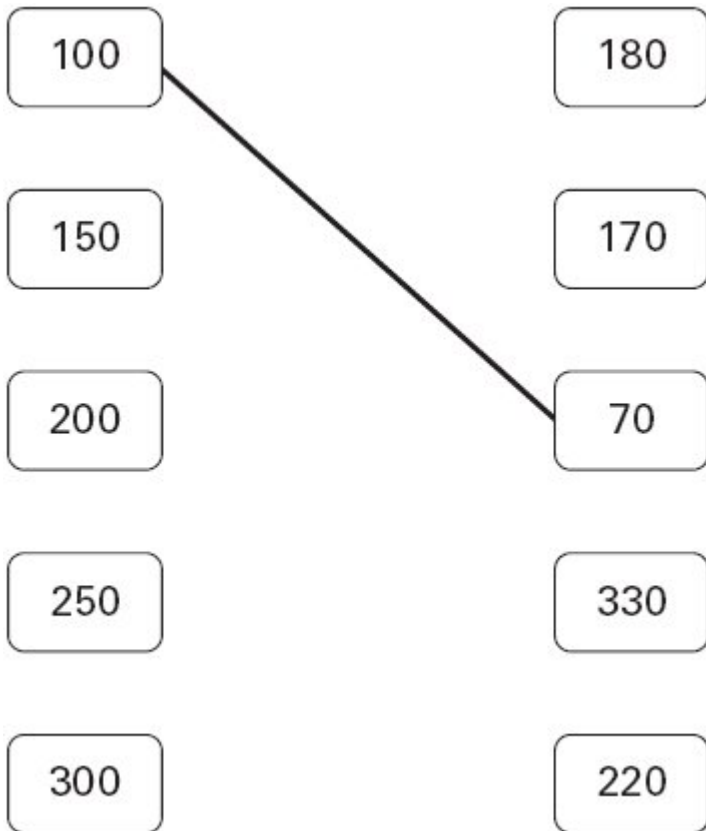
\_\_\_\_\_

2 marks

**Q7.** Draw lines to join **all the pairs** of number cards which have a **difference of 30**

One has been done for you.

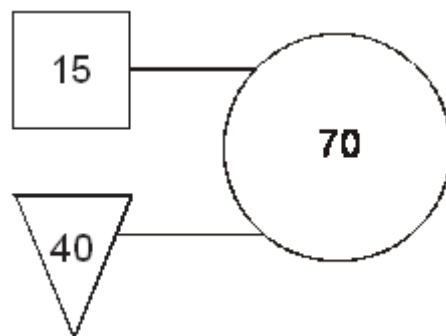




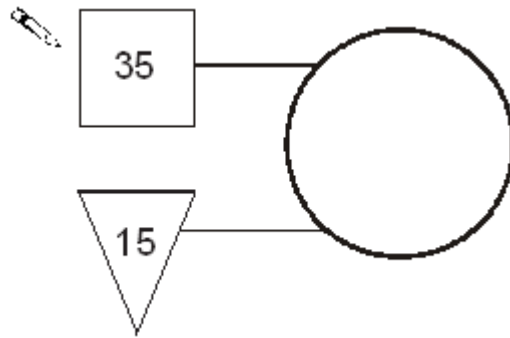
2 marks

**Q8.** In this diagram the rule is

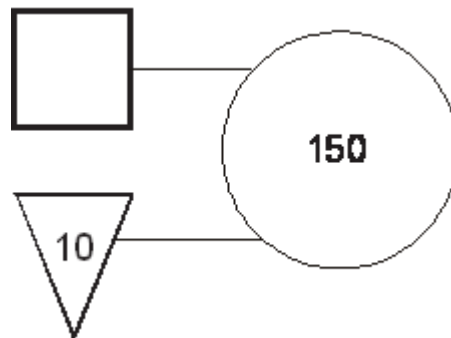
***'double the number in the square and add the number in the triangle to make the number in the circle'.***



Use the same rule to write in the missing numbers below.

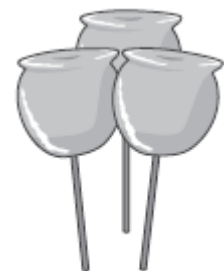


1 mark



1 mark

- Q9.** Kirsty, Seb and Mina made toffee apples to sell at the school fair.  
They made **80** toffee apples altogether.



Kirsty sold **12** toffee apples.

Seb sold **25** toffee apples.

Mina sold **17** toffee apples.

How many toffee apples were left?



Show your working

2 marks

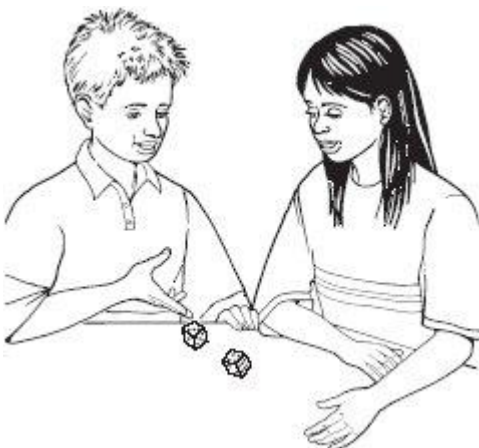
Kirsty sold her 12 toffee apples for 50p each.

How much money did she collect?



1 mark

**Q10.** Mina and Ben play a game.



Mina scores 70 points.

Ben scores 42 points.

How many **more** points does Mina score than Ben?



1 mark

**Q11.** Here are four digit cards.



Use all four digit cards to make this sum correct.

   +   = 100

1 mark

**Q12.** Write the missing numbers.

 57 +  = 125

1 mark

5 ×  = 175

1 mark



**Q13.** Write the missing number.

$$80 + 70 = 190 - \boxed{\phantom{00}}$$

1 mark

**Q14.** Cinema tickets cost **£3.65** each.

Hannah buys **4 tickets**.



How much does Hannah pay?

£

1 mark



popcorn  
£1.95



milkshake  
£1.25

Nico buys a box of popcorn and two milkshakes.

How much does Nico spend **altogether**?

Show your **working**.  
You may get a mark

£

2 marks

Q15.



This table shows the numbers of children who went walking, sailing or climbing at an outdoor centre.

	May	June	July
walking	25	80	75
sailing	15	42	50
climbing	18	27	23

How many children went **sailing** in **May, June and July** altogether?



1 mark

How many **more** children went **walking** in **June** than **climbing** in **June**?



1 mark

Resource currently unavailable.